

Centre for Sensors and System Integration (CSSI)

Northern Alberta Institute of Technology (NAIT)

📍 Edmonton, AB



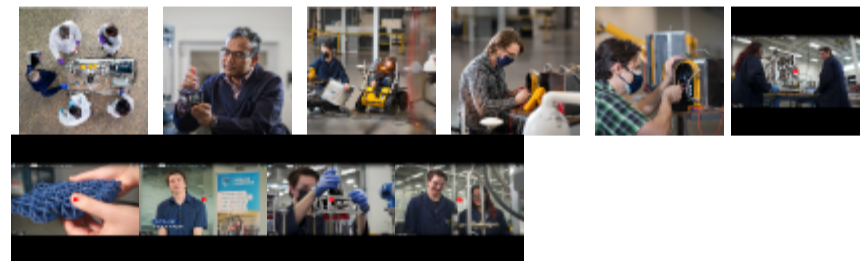
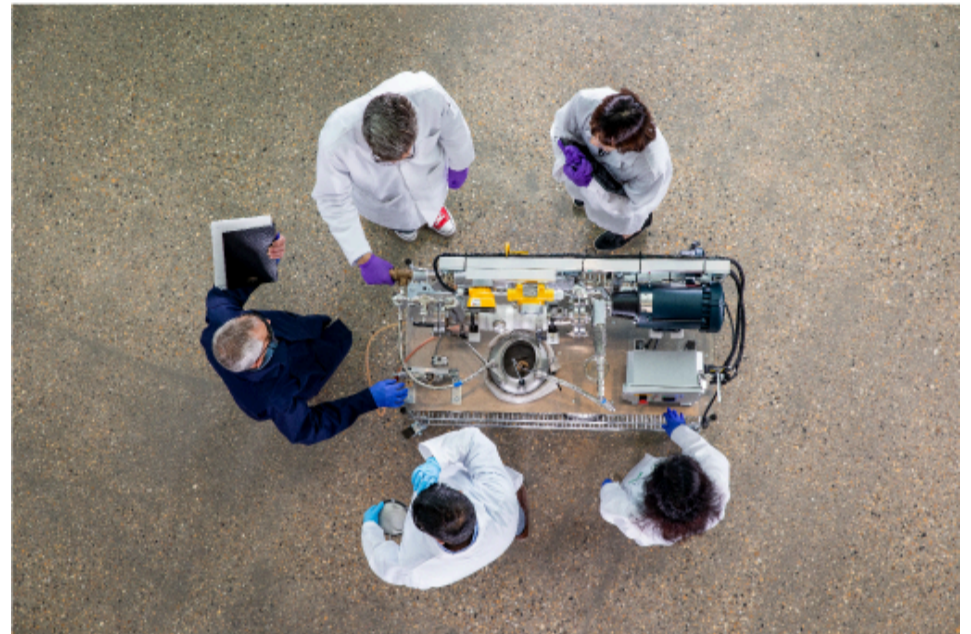
CENTRE FOR SENSORS AND SYSTEM INTEGRATION

ABOUT CSSI

NAIT's Centre for Sensors and System Integration (CSSI) is a Technology Access Centre (TAC) staffed with professional researchers to support businesses on applied research and development projects that deliver a new product, an improved service, or a more efficient process.

Businesses across all major Alberta industry sectors have identified digital transformation as being the critical next step in their operational evolution. CSSI helps address parts of these digitization challenges through prototyping activities in preparation for later commercialization, which in turn enhance a company's productivity, competitiveness, and innovation.

We may be automating a manual process, trialing the use of existing technology in an innovative way, sourcing an idea from another industry and developing a tool to meet the application, or designing and building something brand new.



Contact CSSI

👤 **Pamela Ebeid**
Operations Manager

☎ [+1-780-471-8473](tel:+17804718473)

✉ PAMELAE@nait.ca



🔗 nait.ca/cssi

📍 10210 Princess Elizabeth Avenue NW, Room PIC 103, Edmonton, AB T5G 0Y2

🗣 **Services offered in:** English and French

✅ **Request Interactive Visit:** <http://interactivevisits.ca>

Follow Us:



Share with someone:



RESEARCH AND INNOVATION EXPERTISE

EXPERTISE

1. Sensor Development
2. Prototyping, Fabrication, and Installation Services
3. Embedded System Design
4. Concept or Process Validation
5. Technology Workflow Consultation
6. Project Management
7. Business Mentorship
8. Early-stage business development
9. Non-destructive inspection (NDI)
10. System Performance Monitoring
11. Test and Characterization
12. Sample Analysis and Testing
13. Literature reviews
14. Field trials / Simulations
15. Technology Evaluation / Validation

