

National Bee Diagnostic Centre (NBDC)

Northwestern Polytechnic

📍 Beaverlodge, AB



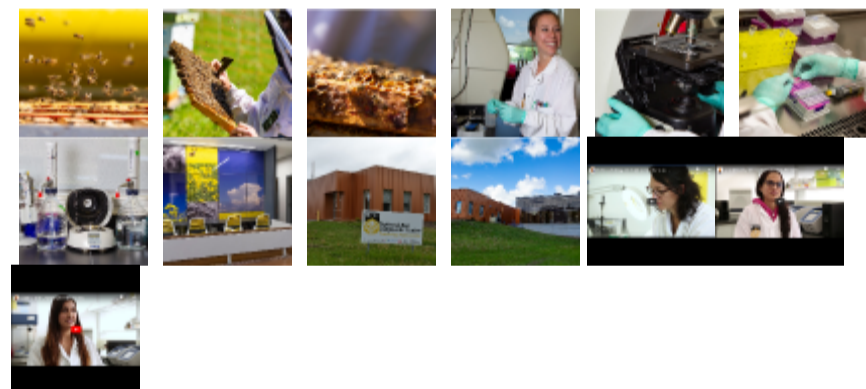
ABOUT NBDC

The NBDC-TAC provides critical diagnostic services to beekeepers, researchers, Provincial and Federal agencies and Industry as its contribution towards a healthy, sustainable and profitable apiculture industry in Canada. We employ microbiology, microscopy and molecular techniques in order to identify pests, pathogens and parasites affecting honeybees.



Bees fly around a brood frame

Credit: Randy Vanderveen Photography/ Northwestern Polytechnic

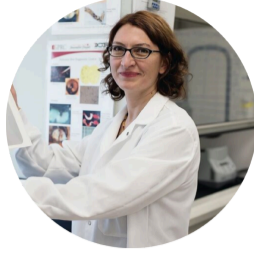


Contact NBDC

 **Patricia Wolf Veiga**
Manager

 [+1-780-357-7736](tel:+17803577736)

 PWolfVeiga@nwpolytech.ca



Follow Us:



Share with someone:



 nwpolytech.ca/nbdc/index.html

 [PO Box 1118, Beaverlodge, AB T0H 0C0](#)

 **Services offered in:** English, Spanish, Portuguese

 **Request Interactive Visit:** <http://interactivevisits.ca>



RESEARCH AND INNOVATION EXPERTISE

EXPERTISE

1. Molecular diagnostics
2. Expression analysis
3. Next Generation Sequencing
4. Sperm/Spore Viability tests
5. In-Situ Hybridization
6. High Resolution Melting analysis
7. Project management
8. Technology development
9. Sample analysis and testing
10. Scientific and technological monitoring
11. Technology validation and transfer
12. Design of experiment
13. Interactive workshop sessions
14. Design, development, and delivery of customized training
15. Connections to co-op placement opportunities
16. Qualitative and quantitative research
17. Networking events
18. Presentation of results at conferences
19. Publishing in peer reviewed literature
20. Seminars and workshops
21. Industry-specific events and symposia
22. Evening speaker series
23. Participation at trade shows and other venues with or on behalf of partners

